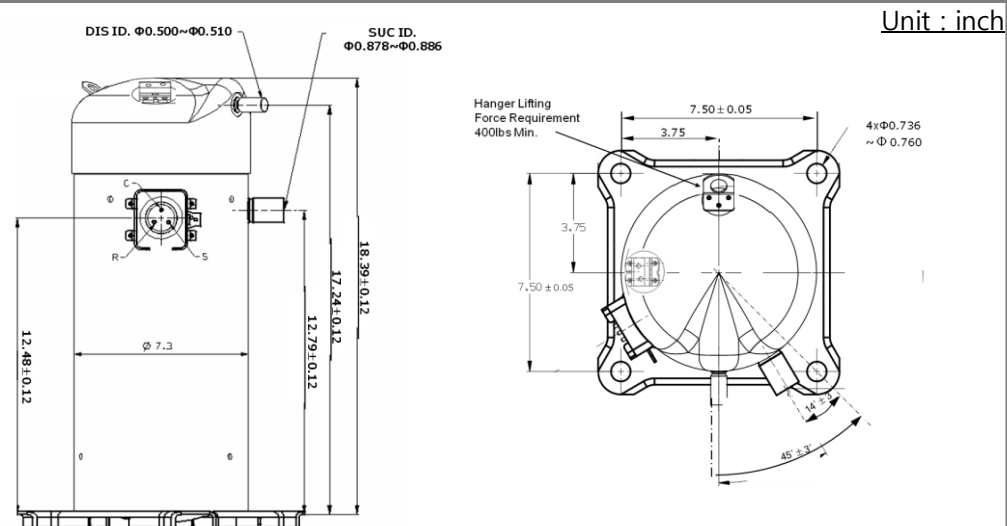


Model	SRA053KA	Power	1ph, 208~230V, 60Hz		
Application Range					
Compressor Cooling	Natural				
Evaporating Temp.	-23 ~ 12	°C	-9 ~ 54	°F	
Condensing Temp.	65	°C max.	149	°F max.	
Return Gas Temp.	30	°C max.	86	°F max.	
Discharge Gas Temp.	130	°C max.	266	°F max.	
Motor Wire Temp.	135	°C max.	275	°F max.	
Rated Performance_A					
7.2°C / 54.4°C (45°F / 130°F)					
Capacity	53,500	Btu/h	15,680	Watts	
Motor Input	4,734		W		
Current	21.0		A		
E.E.R (C.O.P)	11.3	Btu/W.h	3.3	W/W	
Rated Performance_B					
7.2°C / 37.8°C (45°F / 100°F)					
Capacity	63,000	Btu/h	10,698	Watts	
Motor Input	3,281		W		
Current	14.8		A		
E.E.R (C.O.P)	19.2	Btu/W.h	3.3	W/W	
Capacity Test Conditions_A					
7.2°C / 54.4°C (45°F / 130°F)					
Evaporating Temp.	7.2	°C	45	°F	
Condensing Temp.	54.4	°C	130	°F	
Return Gas Temp.	18.3	°C	65	°F	
Liquid Line Temp.	46.1	°C	115	°F	
Ambient Temp.	35.0	°C	95	°F	
Capacity Test Conditions_B					
7.2°C / 37.8°C (45°F / 100°F)					
Evaporating Temp.	7.2	°C	45	°F	
Condensing Temp.	37.8	°C	100	°F	
Return Gas Temp.	18.3	°C	65	°F	
Liquid Line Temp.	29.5	°C	85	°F	
Ambient Temp.	35.0	°C	95	°F	
Electrical Components					
Running Capacitor	70	µF	440	VAC	
Overload Protector	Internal		UP16MA0515		

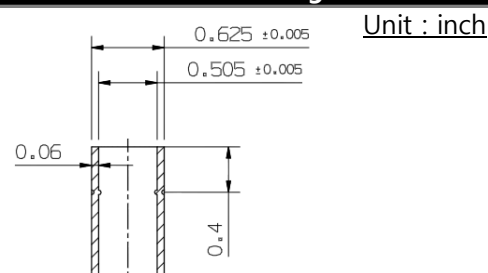
* Specifications are subject to change without notice

* General Performance Variation : ± 3%

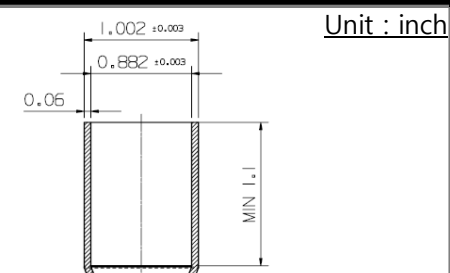
Standard Dimensions



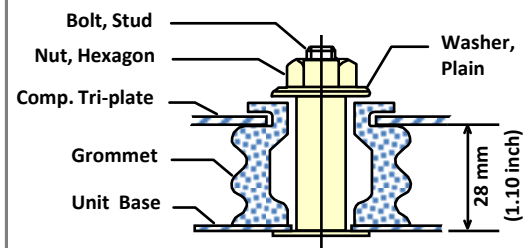
Details of Discharge Tube



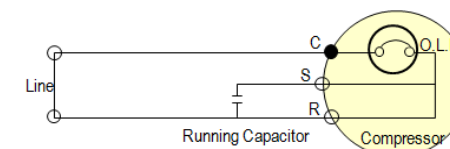
Details of Suction Tube



Compressor Mounting



Wiring Diagram



Sound & Vibration Level_A			
Sound Level	76	± 2	dB
Amplitude	Max 50		μm
Acceleration			GAL

Sound & Vibration Test Conditions_A				
Evaporating Temp.	7.2	°C	45	°F
Condensing Temp.	54.4	°C	130	°F
Return Gas Temp.	18.3	°C	65	°F
Liquid Line Temp.	46.1	°C	115	°F
Ambient Temp.	35.0	°C	95	°F

Compressor Basic Information				
Type	Low Side Shell / Constant / Scroll			
Displacement	70.5	cc/rev		
Oil Type	POE(RB32G)			
Oil Charge	1650	cc	55.8	fl.oz
Weight	43.5	Kg	95.9	lb

Motor Basic Information				
Type	Single Phase Induction Motor			
Rated Output	4000	W		
Winding Resistance (Ω) (@25°C, 77°F)	0.362	± 7%	(U-V), Main	
	0.550	± 7%	(V-W), Sub	
		± 7%	(W-U)	
Voltage Range	187~256	V		
Locked Rotor Amps.	157	A		

Etc..				

Sound & Vibration Level_B	
Sound Level	dB
Amplitude	μm
Acceleration	GAL

Sound & Vibration Test Conditions_B		
Evaporating Temp.	°C	°F
Condensing Temp.	°C	°F
Return Gas Temp.	°C	°F
Liquid Line Temp.	°C	°F
Ambient Temp.	°C	°F

Operation Limits	
Discharge Pressure	Max. 370 psi (26.0 kg.f/cm ²)
Suction Pressure	17 ~ 91 psi (1.2 ~ 6.4 kg.f/cm ²)
Motor Coil Temp.	Max. 135°C(275°F)
Discharge Temp.	Max. 130°C(266°F)
Refrigerant Charge Limit	Max. 4,950 g (174.6 oz)
Continuous Flood Back	Continuous Flood Back before the compressor should not be more than 10% of the total circulation quantity of refrigerant.
On/Off Interval & Cycles	On / Off = 3 Minutes / 3 Minutes 20,000 Cycles or less
Voltage Range	Rated Voltage(V2) ± 10 %
Frequency Range	Rated Frequency ± 2 %
Compression Ratio in Operating	The Compression ratio in operating shall be 6.7 or less, except 3 minutes starting period.
Pressure Difference at Start up	When starting, discharge pressure is balanced with suction pressure
Inclination in Operation	The allowable tilt of the compressor in operation shall be 3° or less

* Specifications are subject to change without notice

* General Performance Variation : ± 3%

R22

Max. 370 psi (26 kg.f/cm²)

17 ~ 91 psi (1.2 ~ 6.4 kg.f/cm²)

Max. 135°C(275°F)

Max. 130°C(266°F)

Max. 5,400 g (190.5 oz)

R410A

Max. 597 psi (42 kg.f/cm²)

37 ~ 156 psi (2.6 ~ 11 kg.f/cm²)

Max. 135°C(275°F)

Max. 130°C(266°F)

Max. 5,400 g (190.5 oz)

